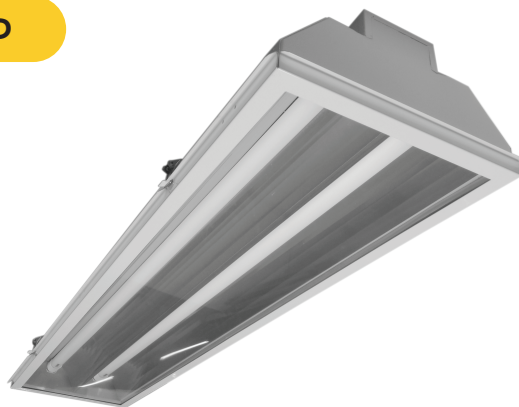
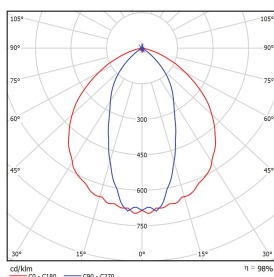


LED T8 High Bay

MODEL : MSB243CS-AL/LED



TIS.902 PART2(1)-2557



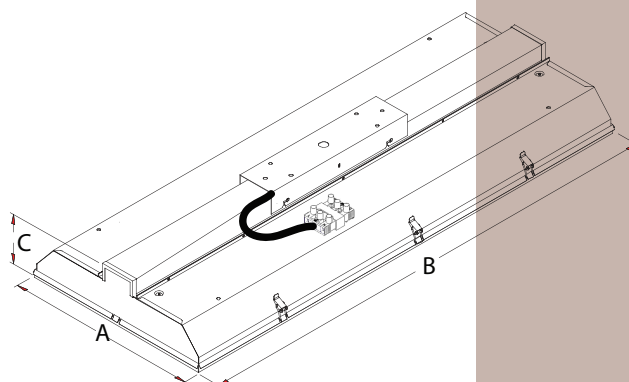
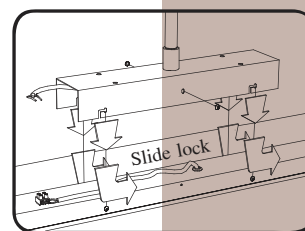
TIS.1955-2551



SPECIFICATION

- HOUSING** STEEL SHEET THICKNESS 0.6 MM. AND PROVIDED WITH SUFFICIENT KNOCK OUT IN TOP,SIDES AND ENDS.
- ALL METAL PARTS ARE TO BE RUSTPROOFED AFTER FABRICATION TO PREVENT ANY CORROSION
- (ZINC PHOSPHATE) AND FINISHED WITH HIGH GRADE EPOXY POLYESTER POWER COATING
- REFLECTOR** 99.99 % PURITY ANODIZED ALUMINIUM REFLECTOR TO PROVIDE TOTAL REFLECTANCE TR 95 %
- MIRROR FINISHED.PARABOLIC MACHINE TO PROVIDE OPTIMUM OPTICAL PERFORMANCE FOR LONGITUDINAL
- HIGH QUALITY CHEMICALLY BRIGHTENED AND ANODIZED ALUMINIUM IN SPECULAR FINISH. PARABOLIC SHARP VANES ENSURE HIGH EFFICIENCY OPTIMAL
- DIFFUSER** IS MADE OF GRADE A ACRYLIC WITH 2.5 MM.THICKNESS KIND OF ACRYLIC : CLEAR
- RUBBER AROUND FRONT COVER TO PROTECT DUST. IP 54
- ใช้ระบบสล็อตแบบป็นโดทำด้วยเหล็กชุบ Zinc เพื่อป้องกันการกัดกร่อนอย่างมีประสิทธิภาพ
- ELCETRIC WIRE THW SIZE 1.0 SQMM. 70 C 750 V. CERTIFIED BY TIS NO.11-2531
- TERMINAL BLOCK INSERT-TYPE CONNECTION ENSURE BETTER ELECTRICAL CONTACT AND EASY MAINTENANCE LIGHT OUTPUT RATIO (LOR) 93 %

DRAWING



Description					
Model	Power	Dimension (mm.)			
		A	B	C	
MSB243CS-AL/LED	2 x LED T8	300	1230	135	

Note : Subject +/- 2 mm.
Ceiling : Cut out (mm.)