

BC5401

LED Explosion Proof Portable
โคมไฟกันระเบิดLED

Ex db e IIC T6 Gb
Ex tb II C T80°C Db,IP66

SPECIFICATION

Applications

- It can be widely used in petrochemical plants, oil platforms, oil pump housing, transit stations and other flammable and explosive places as fixed lighting.
- Gas explosive environment: Group IIA、IIB、IIC.
- Zone1, Zone2; Zone21, Zone22

Characteristics

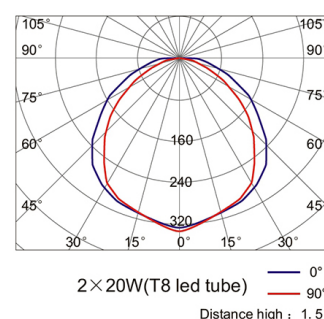
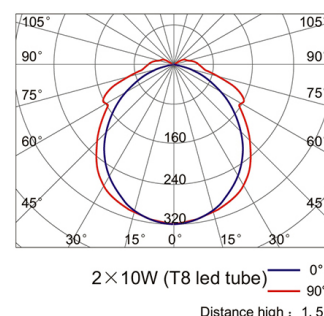
- It is made using a special aluminum housing, suitable for long-term highly corrosive environment of offshore platforms, chlor-alkali, hydrogen sulfide, etc.
- Derrick mounting fixture adopt high anti-corrosive aluminum and locking angle equipment, can be safely used in drilling platforms and high vibration environment.
- The anti corrosion,abrasion proof, power coated cover which is dust proof, water proof,make the lamp an excellent high pressure environment
- Bracket,reflector,guard, and all exposed fasteners adopt 304 stainless steel (customizable 316), can effectively guarantee the strength and strong anti-corrosion performance of lamp
- Terminals are provided at both ends, can be directly wired in parallel, eliminating the junction box and installation costs.A variety of installation as optional: ceiling, oil derrick, the side walls, curved rods, boom,etc.

Main Specification

Item	Technical Parameters	
Rated power	2×20W(T8)	2×10W (T8)
Input voltage range	90~264VAC	
Rated frequency	50Hz / 60Hz	
Light source	LED	
Light efficiency flux	3600lm	1800lm
CRI (Ra)	80	
Life time (h)	50000	
CCT	5000K Or 6000K	
cable entry thread	M20×1.5,M25×1.5, G3/4",NPT1/2",NPT3/4"	
Terminals	Multi core:<2.5mm ²	
	Single core:<4mm ²	
Dimension(mm)	1390×180×110	780×180×110
Net weight (kg)	10.7	6.6

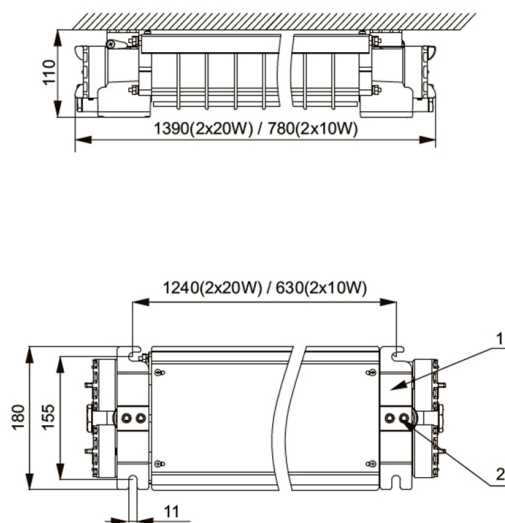


TIS.1955-2551



Drawing of dimension (Dimensions in mm)

Ceiling-mounted



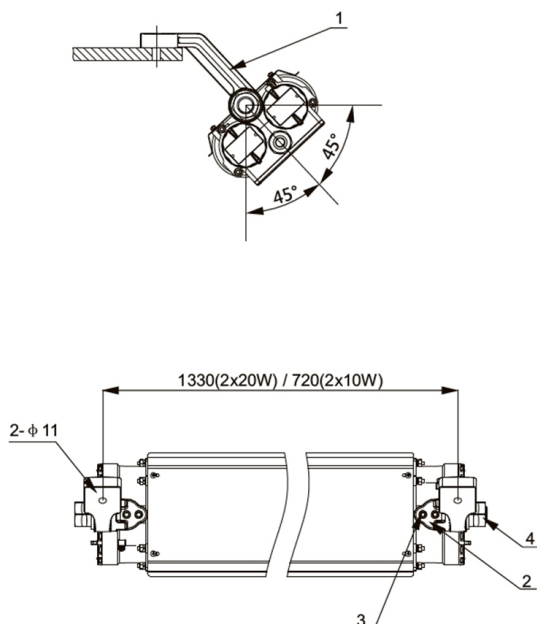
Lamps Ordering Information

Order No.	Installation	Lamp power	Replace
			fluorescent
BC5401-L20A	ceiling	2×10W	2×20W
BC5401-L40A		2×20W	2×40W

Fitting Ordering Information (Standard)

Order No.	No.	Specifications Model	Quantity
P01	1	Ceiling Bracket	2
	2	M8 Inner six angle bolt	4

Derrick installation



Lamps Ordering Information

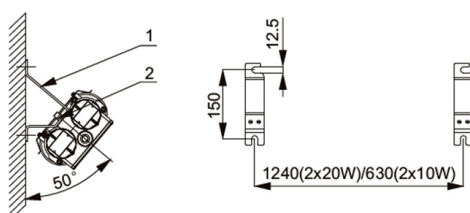
Order No.	Installation	Lamp power	Replace
			fluorescent
BC5401-L20A	Derrick type	2×10W	2×20W
BC5401-L40A		2×20W	2×40W

Fitting Ordering Information(Optional)

Order No.	No.	Specifications Model	Quantity
P02	1	Derrick bracket	2
	2	Base	2
	3	M8 Inner six angle bolt	4
	4	M24 screw	2

Drawing of dimension (Dimensions in mm)

Sidewall installation



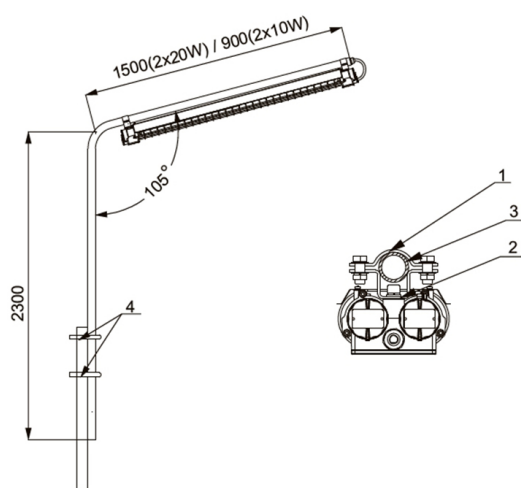
Lamps Ordering Information

Order No.	Installation	Lamp power	Replace
			fluorescent
BC5401-L20A	Sidewall	2 × 10W	2 × 20W
BC5401-L40A		2 × 20W	2 × 40W

Fitting Ordering Information (Optional)

Order No.	No.	Specifications Model	Quantity
P03	1	Sidewall bracke	2
	2	M10 Inner six angle bolt	4

Pole mounting



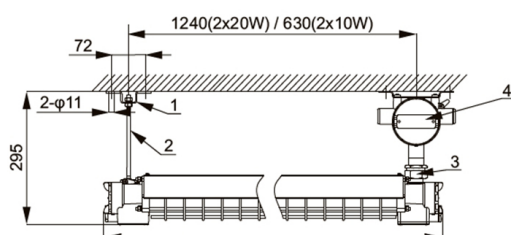
Lamps Ordering Information

Order No.	Installation	Lamp power	Replace
			fluorescent
BC5401-L20A	Pole	2 × 10W	2 × 20W
BC5401-L40A		2 × 20W	2 × 40W

Fitting Ordering Information (Optional)

Order No.	No.	Specifications Model	Quantity
P04	1	Upper hoop	2
	2	Under hoop	2
	3	DN32 Poles	1
	4	U tube clip	2

Ceiling mounting 2



Lamps Ordering Information

Order No.	Installation	Lamp power	Replace
			fluorescent
BC5401-L20B	Ceiling	2 × 10W	2 × 20W
BC5401-L40B		2 × 20W	2 × 40W

Fitting Ordering Information (Optional)

Order No.	No.	Specifications Model	Quantity
P05	1	Pole mounting bracket	1
	2	19cm Screw(M8)	1
P02	3	Connector G3/4" male- male	1
BHD01	4	Explosion proof junction box	1